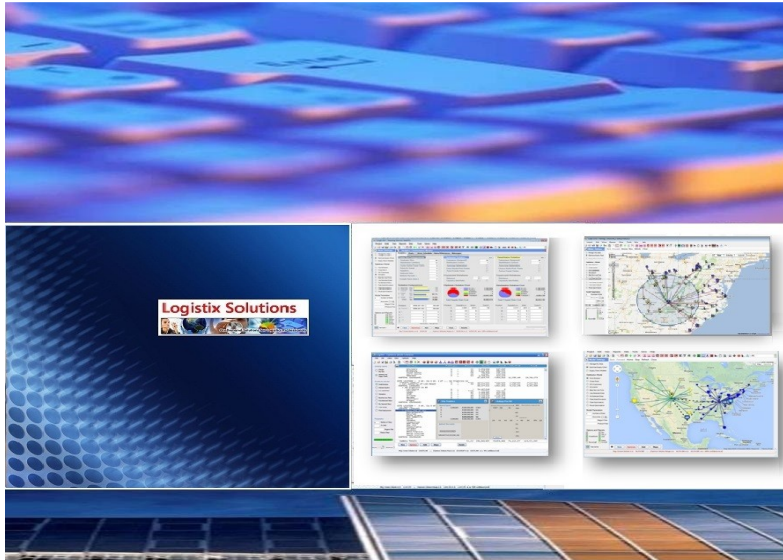


Logix 5.0[®]

New Features and Users in the News – September 2014



Logix Solutions
On-Demand Solutions for Logistics Professionals

What's new at Logix Solutions

Logix 5.0[®] is used throughout the food and beverage industry by some of the largest food distributors as well as smaller food product suppliers. For every user, results matter and Logix helps them improve efficiencies, customer satisfaction and profitability.

Logix has the unique capability to accurately represent food and beverage distributors costs whether using Less Than Truckload (LTL), Truckload, private fleet or dedicated fleet product transportation.

This month's New Users and Users in the News focuses on this unique capability and one of our long-time users in the food business.

Robert Camozzo

President
Logix Solutions

New Features and Users in the News – September 2014

In This Issue:

Complex Distribution – Simple Solutions – One of Logistix Solutions' newest customers is a mid-tier supplier of specialty cheese products with product distribution to distributors, wholesalers and mega stores throughout the United States. Logix identifies cost saving supplier direct, cross dock and multi-stop truckload transport opportunities on a daily basis.

New International Capabilities – Logix works just as well in Europe and China as it does in the United States thanks to new and better geocode data bases and Logistix Solutions overseas partners. Learn what's new and how we're helping international companies optimize global supply chains.



Logix® Distribution Network Design and its integrated Fleet Optimization capability is one of the unique features of this award-winning software.

For one of Logistix Solutions' food product suppliers with over \$500 million in annual sales, knowing which of three warehouses, multiple suppliers and inbound port locations should ship products taking into account freight rates, freshness, load consolidation and product availability factors is key to minimizing transport costs.

Logix' Fleet Optimization and Truckload Routing and Scheduling software combined with its Distribution Network Design optimizer assigns orders to the best distribution point including cross dock options. Each week a new transport schedule is produced to make sure products arrive on time and at the lowest cost including inbound shipping and outbound delivery.

Loads are assigned from one central planning location taking into account a full week's orders across the company. An initial estimate of over one million dollars in annual savings is being captured with shipments that can vary every week and loads that are optimized to maximize efficiency.



ONE OF LOGISTIX SOLUTIONS' BIGGEST CUSTOMERS DISTRIBUTES SOME OF THE FINEST CHEESE IN THE WORLD, OFTEN IMPORTED FROM ITALY AND FRANCE OR MANUFACTURED IN THE DAIRY HEARTLAND OF AMERICA.

WITH PROFITS MEASURED IN PENNIES PER POUND, FINDING EVERY OPPORTUNITY TO SAVE TRANSPORT COSTS IS JUST AS IMPORTANT AS DELIVERING FRESH PRODUCT.


KNOWING WHEN TO SHIP SUPPLIER DIRECT OR MULTI-STOP TRUCKLOAD VS LESS THAN TRUCKLOAD IS ONE OF THE KEYS TO LOWERING COSTS AND OPTIMIZING PROFITS.

CONTACT INFO@LOGISTIXSOLUTIONS.COM OR 571-426-5951 FOR MORE INFORMATION.

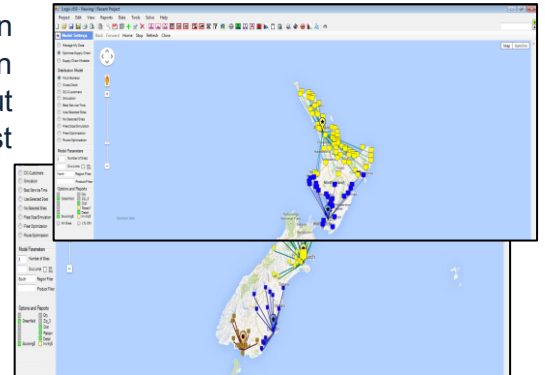


Logix® Distribution Network Design Software and Integrated Fleet Optimization

New and Enhanced Features in Logix5.0

 **New International Capabilities** – Logistix Solutions has been working with partners overseas, like Bestrane Supply Chain Solutions of Melbourne, Australia, to provide customers throughout Asia and the Pacific Rim as well as in Europe and the Middle East with Logix software.

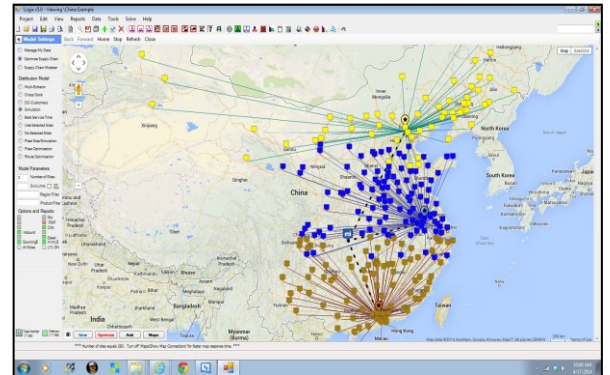
One of the keys to international adoption is Logix' use of Google® Maps which are available worldwide as well as local geocoding indexes which pinpoint locations using address and zip code information.



The following international locations are currently available:

- North America and Canada
- Europe
- Central America
- South America
- Asia
- Middle East
- Africa

Logistix Solutions continues to work with individual customers and map providers worldwide to provide greater geocoding and mapping capabilities and precision at a reasonable cost.



For more information on the Logistix Solutions suite of products, visit our website at www.logistixsolutions.com or contact Logistix Solutions at 571-426-5951 or e-mail info@logistixsolutions.com.

LOGISTIX SOLUTIONS – Technology for Logistics Professionals

Logistix Solutions was established in 2006 as a software and consulting company to provide premier technology solutions and in-depth industry knowledge for logistics professionals. We offer award-winning, on-demand Supply Chain Planning and Execution applications at a revolutionary value for rapid ROI and benefit realization.

- ✚ *Supply Chain Planning and Execution (SCP&E) software solutions offered:*
 - *Distribution Network Design and Supply Chain Optimization*
 - *Sourcing and Procurement Optimization*
 - *Routing and Scheduling Fleet Optimization*
 - *Transportation Resource Scheduling and Execution*
- ✚ *Support, training and consulting services provided by experienced supply chain practitioners and logistics software experts.*

Based on extensive development working with Fortune 1000 companies, Logistix Solutions provides full-featured, on-demand supply chain solutions and consulting services for commercial real estate services firms, retailers, manufacturers, third party logistics providers, consultants, food and beverage and other distributors to support strategic planning and logistics execution requirements.



For more information on the Logistix Solutions suite of products, visit our website at www.logistixsolutions.com or contact Logistix Solutions at 571-426-5951 or e-mail info@LogistixSolutions.com.